



Melville High News

Private Bag 3107, Hamilton, 3240, New Zealand
Tel: 07-843-4529; Fax: 07-843-0358

Issue 7

September 2015



BOYS BASKETBALL TEAM OFF TO THE NATIONALS

The Senior Boys' Basketball team is off to the Secondary School National Basketball tournament in Palmerston North during the first week of the October holidays. The team was convincing winners of their Tournament at the ASB Centre in Mount Maunganui, playing through the whole tournament undefeated.

The team will be playing in the "A" grade for schools with a roll of less than 600. The team will be frantically fundraising to raise the money for travel and accommodation for Palmerston North. I thank you all for your support of their activities.

I would like to acknowledge the sustained hard work of the coaching and managerial staff for their commitment to the team. Special thanks go to whanau and friends who have support all these young athletes and indeed all the students who took part in a very successful Tournament Week. I would especially like to acknowledge the work of Coach Phillip Smiler and his manager Tapsell Enoka.

NCEA SENIOR REPORT EVENING—BOOK ONLINE

Interviews are to be held on **Wednesday 23 September**
from 5.30pm—7.30pm in the Hall.

These interviews are for Y11-13 students only.

You can book your interview times by going to www.schoolinterviews.co.nz from
11 September 2015

The code you will need to use is **R4SVM**

If you can't book from home, please contact our front office on 07 843 4529
and Claire or Maree will help you out

Featuring.....

Principal's Message — Pg 2

Student Leaders celebrate reading—Pg 3

Year 10 Camp—What you need to know—Pg 4

Raglan Photo Shoot & Technology Catchup & Algebra Assessment—Pg 5

International News & Term 3 Calendar — Pg 6

English Poetry trip—Pg 7

Waitomo Geography Trip—Pg 8

NCEA Exams—Pg 9

Futures @ MHS—Pg 10

Sports @ MHS—Pg 11



Are you looking for good childcare and also want to give back? Our au-pairs are looking for wonderful Kiwi families to look after your children and experience the typical Kiwi lifestyle. Registration is free and we cater to all kinds of families (big, small, city, rural, part time, full time). More info can be found on our website: www.aupairnewzealand.co.nz.

DO YOU WANT TO KNOW MORE ABOUT THE FOOD YOU BUY?

We are looking for Māori and Pacific volunteers!

We want to help you make healthier food choices for you and your family. Take part in our 5-week smartphone nutrition labelling study (Starlight) and receive up to \$90

TO JOIN VISIT: www.diet.auckland.ac.nz/content/starlight

<p>WHAT WILL THE STUDY INVOLVE?</p> <ul style="list-style-type: none"> NO APPOINTMENTS just download our smartphone app USE THE APP to look at nutrition labels while you shop USE THE APP to record food and drinks you buy COLLECT grocery till receipts 	<p>ANY QUESTIONS? PLEASE CONTACT US</p> <p>General enquiries Dr Katya Volkova: 09 923 4742 starlight@nhi.auckland.ac.nz</p> <p>Māori enquiries Callie Corrigan: 09 638 5800 / ext 021 684 631 callie@toitangata.co.nz</p> <p>Pacific enquiries Gerhard Sundborn: 09 261 3490 / 021 100 3989 gerhard.sundborn@leva.co.nz</p>
---	---

Study approved by the University of Auckland Human Participants Ethics Committee on 26/1/14 (for 3 years) Reference 011300

PRINCIPAL'S MESSAGE

Tena koutou katoa.

This has been a busy term and as it draws to a close we are very focused on helping senior students to work towards the external exams next term. By the end of this term we will have had a series of very positive interactions with students, and students and parents over their learning. I have been particularly impressed with the leadership and effort displayed by my SLT, our Leaders of Curriculum, Heads of Curriculum and teachers in their endeavours to support students. They have been providing extra lunchtime, afterschool and weekend opportunities for further assessment opportunities and other support to senior students.

Parents and Caregivers of senior students are reminded of the **Senior (Years 11 – 13) Report Evening in the Hall on Wednesday 23 September from 5:30 – 7:30pm**. A summary report of NCEA achievement is enclosed with this newsletter. Staff will be available to discuss progress, and elaborate on the significance of the report data and pathways forward. Bookings can be made online or through the school office.

I would like to congratulate all of our school who took part in the national secondary school's Tournament Week. We had Boys Basketball in Tau-ranga, Girls and Junior Boys Basketball at Rotorua, Girls Football and Netball in Hamilton. All teams competed well and represented Melville High School with pride. Each group had a tight team of parent and whanau support and each team performed very creditably setting positive milestones of success. There is further comment elsewhere.

I would like to thank **Kaity** for her contribution to the role of Student Representative on the Board of Trustees. Applications closed on Friday 11 for the new Student Rep and the results will be declared on October 3.

Over the last few weeks our winter sports codes have been drawing to a close. All these activities could not have happened without the consistent and determined support of family, whanau, clubs and the wider community. Long hours of training and practices, trips near and far, fundraising and a host of other activities have been undertaken to ensure successful seasons. The level and extent of the support provided for these teams has been extensive. I would also like to acknowledge the number of parents, whanau and friends of the school who have consistently turned up as spectator support. Invariably Melville High supporters have consistently out numbered and "out vocalised" opposition supporters. Thank you one and all for a very successful winter season.

Our focus now turns to supporting our senior students. The weeks ahead for them are vital. Parents and caregivers are encouraged to support our senior students to prepare for the NCEA externals. This year some senior students who do not have external examinations and who have not gained the required credits, will not be released on Friday November 6th. Instead we will be providing them with a supplementary programme of work to ensure they achieve the required number of credits. Parents will be informed of this by letter in the enclosed senior student reports.

Finally I am look forward to your involvement in our upcoming **Sports and Cultural Prizegiving** on Thursday 22nd October (2nd week in Term 4) followed by the **Senior Academic Prizegiving** on Thursday 5th November.

Clive Hamill
Principal



STUDENTLEADERS CELEBRATE READING



On Tuesday September 8th, Head Boy **Arama** and Head Girl **Ghia** attended Melville Primary School special assembly to speak to the children about their passion for reading. Our participation in this assembly was part of the Books in Homes Reading Week.

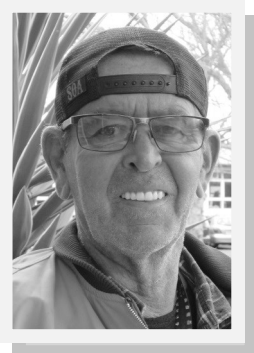
The Books in Homes is a programme which is funded by a charitable trust and plays a key role in developing a love of books in children. The trust provides free and subsidised books to over 100,000 New Zealand children, three times a year. Recipient children end up with a fun library of self-chosen books at home by the time they leave primary school.

Arama and Ghia spoke about how books had been vital in their lives and how reading had helped to get them where they are today. The head students presented the primary school with a children's book each, while I thoroughly enjoyed the opportunity to read aloud **Stellaluna** to the assembly, Melville Primary reciprocated by presenting our Head Students with a book each.

It was a very positive occasion and we thank Melville Primary for this opportunity to celebrate reading.

FAREWELL

Barry Kemp



Long term Caretaker Barry Kemp bade farewell to the school this week after 7 years loyal service. Barry is retiring and he and Jo are relocating to sunny Waihi. Barry was well liked by students and staff and always had a positive disposition. A colourful staff member Barry utilised his many skills to keep the school functioning well.

We thank Barry for his many and varied contributions and wish him and Jo all the very best in retirement and with their brand new residence in Waihi

Kelli Kemara



We will be farewelling Kelli at the end of the term. Kelli has spent a very productive year in the role of Assistant Principal. She has excellent interpersonal skill and passion and energy to implement change. We will miss her vibrancy and penchant for getting things done.

Kelli leaves us to take up a regional manager's role with the Intueri Education Group which is a New Zealand headquartered group of private training organisation delivering vocational education to students in New Zealand, Australia and from around the world. This includes the Quantum Group, Cut Above, Design and Arts College of New Zealand, Elite International School of Beauty and Spa Therapies, Information Technology Training Institute, NSIA - The Professional Hospitality Academy and the New Zealand School of Commercial Diver Training.

We wish Kelli all the very best in her new career.

MILO & MUFFINS



Milo and Muffins help English students do well in exams.

Once again, the English teachers provided Milo and Muffins before each practice English exam in Week 6. We have found that students are more likely to stay longer if they eat before the exam and they have a sense of purpose when they walk over to the Hall together.

YEAR 10 CAMP, TUI RIDGE **WHAT YOU NEED TO KNOW**

DATE: 16-20 November, Week 6, Term 4. Year 10 Classes will spend two nights and three days at Camp, an alternative programme will be offered on the days the students are based at Melville High School

TRANSPORT: Buses will transport classes to and from Tui Ridge, departing from Melville High School.

WHO: ALL Year 10 Students are expected to attend

COST: Approx. \$70.00 maximum. This will be confirmed early in Term 4. This camp is heavily subsidized by POET and an opportunity not to be missed! Automatic payments can be set up through Student Services please contact on 07 843 4529

ACTIVITIES: Confidence Course, Rogaine (orienteering), Mountain Biking, EFS (Education for Sustainability), Bush craft and Co-operative games, High and Low Ropes – A new activity this year!

STUDENT HIGHLIGHTS from 2014:

- Confidence Course – beating our times and getting better by helping each other out
- Bonding with our team mates, other classes and our teachers
- Exploring and having great adventures
- Mountain Biking – the down hills and mud pits!
- Making our own food on the camp burners
- Getting to know our teachers who did everything the same as us
- Our senior student leaders were awesome

Gear Lists and more information will be provided to families early in Term 4



ROTORUA TOUGH GUY & GAL EVENT

Year 12 Advanced Physical Education.
Thursday 20th August, 2015

It was a beautiful morning to head to the sweet smelling place of Kiwi Ranch, Rotorua, for the annual secondary schools' Tough Guy & Gal event. After a karakia 18 students, Mr Edwards and I started our venture south at 7:15am. We arrived at the event around 9:30am and were greeted with the beautiful, smell of sulphur, as well as a bright sunny day.



Students had to participate in this event as it was worth 4 level 2 and/or 4 level 3 credits, for A.S 91501 "Perform a physical activity to a nationally developed performance standard". The Tough Guy & Gal event requires participants to run a 6km circuit on rough and uneven terrain through cold lakes, waist deep mud, to crawl through long tunnels, scale steep hills, climb over high and under low obstacles, and to beat a time of 52 minutes (Boys) and 57 minutes (Girls) for an achieved grade.



All students, including myself (not bad for an old guy), finished this event, with some students attaining Merit and Excellence grades for achieving impressive finishing times. Thanks to all the students for displaying great behavior throughout the entire day, and a big THANK YOU to Mr Edwards for your help with driving the van.

Matua Ray Stephens

A RAGLAN PHOTOSHOOT

A small group of Year 13 NCEA L3 Art Photography students recently went on a field trip to Raglan.

L3 Photography involves student's engaging in an in-depth exploration and analysis of established artist's work and then creatively interpreting that into their own personal set of work.



The L3 photography course takes the form of two internally assessed sets of work presented in a work journal and assessed here at school, along with an externally assessed submission (folio) which is marked independently in Wellington. All the work done, and artist models studied, link together. The themes to be studied for the year are based on the brain-storming that occurs in the first term. The student's develop their ideas as the year progresses and invariably produce some outstanding results in the end.

Some of the work they have done will be on display in the annual art exhibition which is put on in support of the Sports and Cultural Prize-giving event later in the year.

Keep these Dates Free

7.00pm in School Hall

22 October

Sport's & Cultural Prizegiving

05 November

Senior Academic Prizegiving

WIRELESS AVAILABLE

Students now have access to the School's wireless network. After several months of trialing it is now available to all students.

NCEA SENIOR REPORT EVENING—BOOK ONLINE

This is to be held on **Wednesday 23 September** from 5.30pm—7.30pm in the School Hall. These interviews are for Y11-13 students only.

You can book your interview times by going to www.schoolinterviews.co.nz from **11 September 2015**

The code you will need to use is **R4SVM**

If you can't book from home please contact our front office on 07 843 4529 and Claire or Maree will help you out

Technology Catchup

D1 — Thursday Lunchtime for any Technology theory catch ups.

D2 — Open every Lunchtime for students to catch up on their theory project work.

D15 — Thursday 3.30pm-5.00pm for all DVC catch ups.



MCAT/ ALGEBRA ASSESSMENT: 4 credits

All Level 1 students doing MAT101 course will be sitting the above assessment on 15 September in the morning. This is an external assessment and all students need to be present. There is no other opportunity for this assessment.

No calculators are allowed in this assessment.



INTERNATIONAL NEWS

INTERNATIONAL NEWS

Melville High School has been able to showcase our school in many ways this term.

During Week 2 Tajimi Nishi High School from Japan sent 15 students and two teachers here. They used the wharenui as their classroom, interacting with our students and visiting local places of interest. Already one student wishes to return for a longer time here.



During Week 3 **Jhon** and **Edwin** attended the Mayoral welcome to international students after school on Monday August 3. They really enjoyed the free ice creams after all the speeches and entertainment!



Last week we hosted 21 students and their teachers from Tsurumine High School in Japan for the week, and again one from this group would like to return.

We have also shown other groups around the school who are thinking of attending here, including two Thai students currently at Fraser, as their International Department closes at the end of this year. Staff and students at Melville are making lasting impressions on all of these visitors in fantastically friendly ways - raising our profile in the best possible ways - proving we are THE school of choice.

2015 TERM 3 CALENDAR

Week 9

Mon 14-Thu 17 Y12 Services Camp

Tue 15 Sep External Algebra Assessment

Fri 18 Sep LDS Stake Ball

Week 10

Tue 22 Sep Board Meeting 6.00pm

Wed 23 Sep **NCEA Senior Report Evening 5.30-7.30pm**

25 Sep Talent Quest Finals Period 5
LDS Youth Ball

Fri 25 Sep TERM 3 ENDS

2015 TERM 4 CALENDAR

Thu 22 Oct **Sports & Cultural Prizegiving**

Mon 26 Oct **LABOUR DAY**

Wed 28 Oct Board Meeting 6.00pm

Thu 5 Nov **SENIOR PRIZEGIVING**

Mon 9 Nov -
Fri 4 Dec **NZQA EXAMS**

Mon 16-Fri 20 Nov—Year 10 Camp

Wed 25 Nov—Board Meeting 6.00pm

Thu 3 Dec - Newsletter/reports posted

Fri 4 Dec JUNIOR PRIZEGIVING

Mon 7 Dec **Teacher only Day**
Tue 8 Dec **Teacher only Day**

Tues 8 Dec TERM 4 ENDS

2015 TERM DATES

Term 3 20 July—25 September
Term 4 12 October—8 December

PUBLIC HOLIDAYS 2015

Labour Day Mon 26 October



ABSENCE LINE**Phone 843 5212/Text 027 287 2428**

Please phone or text the above numbers if your child is absent from school for any reason. No note is required on return to school if you phone or text in.

DEANS

Deans are available regarding any subject or behaviour concerns you may have about your child. Phone messages will be responded to at their earliest convenience.

Year 9	Elsie Leslie	Extn 962
Year 10	Arnie Paurini	Extn 960
Year 11	Phillip Smiler	Extn 964
Year 12	Teresa Bayly	Extn 961
Year 13	Lester Silver	Extn 959

STUDENT SERVICES CENTRE

- Notification of change of details
- First Aid
- Student sign out/in for appointments
- Lost property
- Fees payments

STATIONERY/UNIFORM SHOP

Opening hours:

Monday, Friday 11.00am—11.30am

Wednesday 10.45am—11.05am

GUIDANCE COUNSELLORS

Students and families are invited to make appointments with our Counsellors, Lesley Beech and Michelle Holloway-Smith during Tutor time each day or by phone (843 4529 ext 939/940)

CAREERS ADVISER

Students and parents are welcome to make appointments with Mrs Searancke for advice on courses and careers (843 4529 ext 953)

GATEWAY CO-ORDINATOR

Students and parents are welcome to make appointments with Maria Pearce for advice on gateway placements (843 4529 ext 925 or 027 4521026).



We now have a Doctor coming in every Tuesday. This service is free of charge for the students.

Appointments with Doctor Bronwyn Campbell can be made through Student Services.

ENGLISH POETRY TRIP TO WINTER

A group of 10 English students ventured to Wintec to work with Dr. Jack Ross from Massey University's Albany campus. Haiku poetry, which originates from Japan, was used to help the students explore poetic writing. The students learnt about the essence of Haiku, including the famous frog poem.

*A frog
Jumps into a pond
Splash*

They really enjoyed Dr. Ross's revelations about a poetry form much used, but whose deeper messages are often missed. The frog poem is an example of this.

Then the students wrote their own Haiku. The examples, which are currently anonymous, are presented below. Mrs Diaz was particularly proud of all the students who read their poetry aloud on the day.

*She hides
She cries
She smiles*

Cafe

*food to regenerate
water to hydrate
technology to "educate"*

dogs in tech

*looking into his eyes
what was i seeing ?
I guess it's just reality*

*It was so easy,
And now I'm only dropping.
So why do I soar?*

*Power and Control,
How I could Misuse these things
And they're in my grasp*

*I saw all of it,
Fear, Anger, Hate, Suffering,
It was everyday life.*

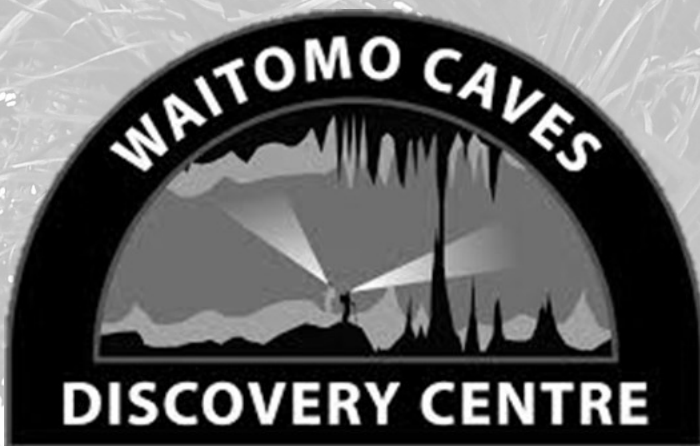


WAITOMO GEOGRAPHY TRIP

The Year 13 Geography class had an amazing trip to Waitomo Caves earlier this term.



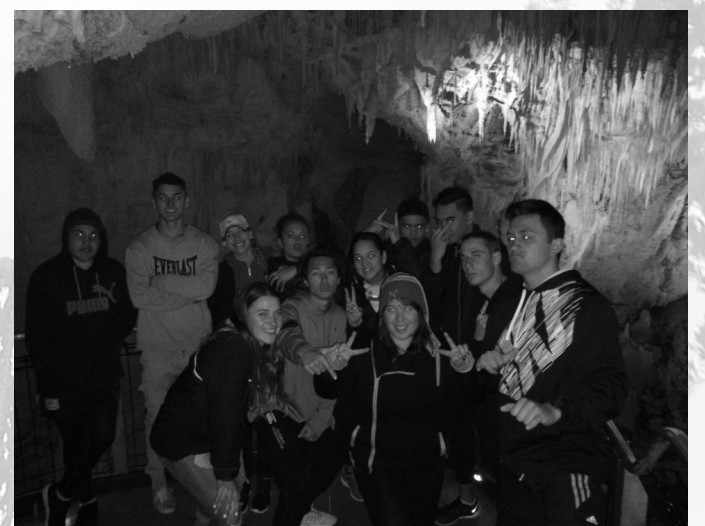
We went on the magical glowworm boat trip, toured the Discovery Centre and Museum as well as we did a guided walk through the Ruakuri Cave.



This trip taught us about tourism in the King Country as well as some of the sustainability issues surrounding the caves.

Thank you to Waitomo Education for making our final Geography trip so fantastic!

Holly Parker—Teacher In Charge



NCEA EXAMINATIONS

The end of year NZQA examinations (externals) are fast approaching and all senior students should be preparing now by revising in evenings, at weekends and over the upcoming holiday period. The external exams begin on Monday 9 November and continue until Friday 4 December. All exams are 3 hours with a start time of either 9.30am or 2.00pm.

The recent practice exams demonstrated that students need to learn how to sit quietly for 3 hours. We go through the NZQA exam rules in detail with the students but the main ones are: students need an examination entry slip to get into the exam; students are to remain quiet throughout; they must not even have an electronic device on them; and if there are any problems with their behaviour they will be removed from the exam.

Students and parents should also be aware of the derived grade process. An emergency just prior to the exam that affects the student's performance may trigger this process. In such cases please contact Mr Ledson urgently. Stress and anxiety before exams do not qualify for a derived grade.

J Ledson
Principal's Nominee



GLENVIEW COMMUNITY CENTRE AGM

We are looking for vibrant, motivated Board Members who have an interest in being a part of extending our services and being involved with the Glenview Community.

Where: Glenview Community Centre, Corner of Glenview Terrace & Tomin Road, Hamilton

When: Wednesday, 16th September 2015 at 6.30pm

Enquires: Rou or Kirstin on 07 8432 600 or glenviewcent@clear.net.nz

All Welcome

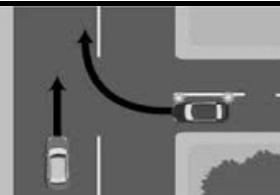
SUSSED?

INFORMED DECISIONS FOR TERTIARY STUDY

Students thinking about further study after they leave school have a lot of choices to make.

Sussed Online is a great way to get thinking about what it will cost to live and study. Will it be broadband and baked beans, or dial up and dining out? Part-time job or parents helping? Hear from students about their experiences and the choices that need to be made. You'll also find out more about StudyLink and what they do along the way.

We encourage students and parents to check it out at www.studylink.govt.nz.



DO YOU WANT TO GET YOUR LEARNER LICENCE IN THE SCHOOL HOLIDAYS?

Glenview Community Centre are running a three day course that will cover all aspects required to sit your learner licence including the test.

When: Monday, 28 Sept – Wednesday, 30 Sept
Time: 9am-3pm
Where: Glenview Community Centre
Cost: \$93.90 Learner Licence Test or \$45.70 to Re-Sit Learner Licence Test

(Spaces confirmed only with payment)
Enquires or to Register contact Rou or Kirstin Ph: 07 8432 600 or glenviewcent@clear.net.nz





YR 13 INTERESTED IN UNIVERSITY STUDY?

Year 13 students who are going on to study at University need to have a look at the scholarships that they can apply for.

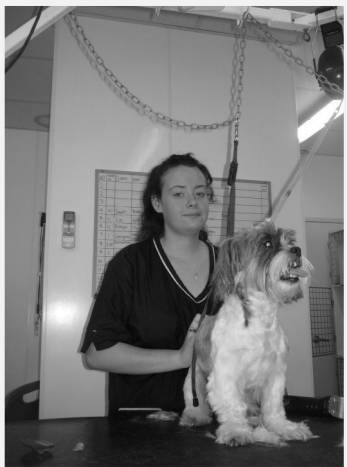
On any school computer they can go to - <http://generosity.org.nz/>. Then click onto Subscriber Login and enter their information then search the site for relevant scholarships.

Also students who have expressed an interest in applying for the Sir Edmund Hilary Scholarship or a David Johnstone Scholarship should see Mrs Searancke as soon as possible to complete their applications.

Applications for University can be completed anytime and you can apply to more than one University before you finally decide what you want. When the University come back and "offer you a place" that's when you need to make a decision.

GATEWAY PLACEMENTS

Alicia —Animates, Dappadogs



This year I went on a placement to Animates. I was working in the 'Dappadogs' area of Animates and it was an amazing experience.

I met some amazing people who taught me a lot of things. I got the chance to shave a dog and I also learnt how to clip dogs nails

and wash them very thoroughly. I also learnt all the things that I have to do to become a dog groomer.

Natalie —The Park Daycare



This year I went on a gateway placement to The Park Daycare.

Having this placement gave me a great idea of what daycare teachers do, as I wanted to be a daycare worker in the future. Doing this placement gave me the perfect opportunity to learn what qualifications I needed and what types of things I will be dealing with, for

example it took me over an hour and a half to put two children to sleep.

This placement also helped me with the assignments I am doing in my Early Childcare class at school.

Lyrik —Hair by Teresa/Glenview Beauty Studio



Both of the placements I have done through Gateway have helped benefit me in helping to decide my future.

Attending the placements gave me ideas for what I want to be and do after I leave school.

The girls employed at Hair by Teresa/Glenview beauty studio

have really helped me understand what qualifications I need and what path to go down for the hair and beauty business.





TOURNAMENT RESULTS

FOOTBALL

Congratulations to our **1st XI Girls Soccer** team who won Premier 2 Division in the Waikato Competition beating St Pauls 7-3 on Saturday to win the title and being unbeaten.

The Girls competed in the Maurice Hulme Football Tournament last week and came 17th out of 24 teams a good accomplishment .

Results

Otumoetai 6 Melville 1
Melville 8 Strahallan 0
Melville 2 Havelock Nth 2
Howick 2 Melville 0
Waikato D 2 Melville 1
Melville 10 Wanganui Girls 0
Melville 7 Iona 1



BASKETBALL

Junior Boys came 12th out of 19 teams. They participated in a strong pool and played very well.

Results

Avondale 70 Melville 44
Rangitoto 79 Melville 60
Melville 95 Otumoetai 42
Melville 72 Gisborne Boys 61
Northcote 77 Melville 57
Tauranga B 83 Melville 68



Congratulations to the **Senior Boys Team** who won the Regional single A tournament last week going through unbeaten and will be going to the Nationals in October.

Results

Melville 100 Raglan 37
Melville 77 Kingsway 46
Melville 89 Te Kuiti 32
Melville 91 Te Aroha 63
Melville 61 Te Koutu Ururoa 28
Final Melville 102 Aquinas 58

Senior Girls Basketball

Results

Hamilton Girls 71 Melville 41
St Peters 75 Melville 29
Western Heights 67 Melville 52
Te Awamutu 51 Melville 17
Tauranga Girls 82 Melville 79

NETBALL

The UNISS Netball team came third overall their grade.

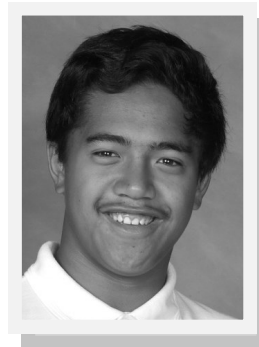
Results

Huanui 28 Melville 23
Putaruru 36 Melville 27
Melville 24 Otahuhu 21
Hamilton Girls 35 Melville 23
Melville 48 Ormiston 11
Melville 29 Onewhero 20
Melville 38 Nga Taiatea 17
John Paul 36 Melville 30
Melville 38 Papamoa 23
Melville 34 John Paul 33



OTHER SPORTS NEWS

RUGBY



Congratulations to **Shannon** who made the Waikato U16 Rugby Team



The Girls Soccer team participated at the Maurice Hulme Tournament last week and performed very well coming 17th overall and just losing to Tournament Winners 2-1 in round robin play.

Considering being a young team we have a good future within soccer at Melville High School so congratulations to the 1st XI girls involved and Team Manager Mrs Anne Morrow and a host of parents that helped Annalise the Coach

The Girls also won the Premier Reserve Waikato Competition, being unbeaten all year long. Well done Team.



Girls 1st XI Soccer Team



UNISS Netball Team



Tournament Week was an experience that all our girls will never forget with outstanding netball played by all players.

The highlighted game was the final game, Melville losing at every quarter but when it came to the fourth quarter we knew we had to do something. A draw at the last 30 seconds of the game and **Claire** gets the turnover and the whole team sends the ball down the court to our shooters with **Keali** sealing our win in the last second before the end buzzer sounded.

The game was played like a final with so much intensity. Congratulations MLV Tournament Team. Many thanks are extended to Coach Whaea Valetta and Manager Michelle Wetere.

