



Featuring

Principal's Message

– exciting start to the new year at Melville High . . . *more on page 2*

Campus Constable –

Melville High joins other Hamilton schools with this new initiative . . . *more on page 7*

Supporting Positive Performance – a new

Year 13 initiative . . . *more on page 8*

Sports@MLV – great start for our cricketers . . . *more on page 14*

Leadership Camp – Year 13 students learn new skills at fun filled camp . . . *more on page 16*

ABSENCE LINE

Phone 843 5212

Text 027 287 2428

Please phone or text the above numbers if your child is absent from school for any reason. No note is required on return to school if you phone or text in.

TAIKO MAORI AND MANGAKOTUKUTUKU

On Monday 9 February 2009, the Mangakotukutuku Kapa Haka group performed at the University of Waikato's Performing Arts Academy. This was a new show which fused Japanese and Māori culture together in song and dance. The show was called Taiko (Japanese Drumming) and Māori (Kapa Haka)

Whaea Te Mana and Yurika Arai collaborated to bring a new exciting show of Japanese drumming, poi, haka and action songs. However, the most exciting parts of the show were when the poi percussion fused with Taiko drumming, the haka "Kamate Kamate" performed by our group and Japanese men, and finally the classical Japanese hit 'Sukiyaki' soloed by Toni-ann.

The audience was thrilled with the performances by Waitaiko (University drummers), Mangakotukutuku and the international musicians, Wasanbon, the best Taiko drummers in Japan.

A big thank you to Matua Aaron, Whaea Valetta, Whaea Louanna and Kuia Mata for their support.

Finally, a big thank you to our wonderful students. You made the night. You are all our stars of tomorrow. Kia ora anō, Piritata and Levi for your leadership.

Whaea Te Mana, Teacher-in-charge Kapa Haka



PRINCIPAL'S MESSAGE

E ngā mātua, e ngā kai-atawhai, e ngā rangatahi, ngā mihi o te tau hou ki a koutou katoa. Ko te tūmanako kei te noho ora mai koutou.

Parents, caregivers and students, New Year's greetings to you all. We hope that you are all in good health.

It is my pleasure to welcome you all to Melville High School. A special greeting is extended to our new families, including a significant number of students from our rural full primary schools. 2009 brings with it several opportunities which will ensure that Melville High School will continue to provide positive pathways for every student. The impressive turnout of new parents at the barbeque, the very successful senior leadership camp, increased numbers at Year 9 and the employment of new staff are all part of this positive beginning.

I have again been impressed by the enthusiasm of our new parents, their willingness to make themselves known to me and my staff and their offers of support. Students learn best in a cooperative partnership between school and home.

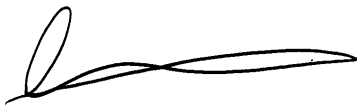
The whole school was saddened by the tragic passing of Year 13 student, Hoki Rangitaawa in a motor vehicle accident on the morning of 25 January. The school will be holding a memorial service for Hoki on Wednesday 4 March in the school hall at 10.30 am.

New programmes include the Melville High School Institute of Sport, additional industry approved programmes in furniture and building and construction, and increased enrolments in distance learning and the like.

I extend our congratulations to Mr Ashok Kumar who has been appointed Deputy Principal at Fairfield College and starts his new role in Week 6 this term. Ashok has been an invaluable member of school leadership, a great school administrator and an awesome science teacher. Mrs Sangita Achary is the Acting HOD Science pending the appointment of a new HOD Science.

You may be aware that some senior students were interviewed at the end of last year about their lack of focus. We have stressed to all senior students that they need to apply themselves to their studies if they wish to remain at school. Our goal for all students is that they are focused on an effective learning pathway and we will be actively supporting them in this regard.

Kia Ora (Good health)



Clive Hamill
Principal

BOARD OF TRUSTEES REPORT

The Board of Trustees has its first meeting next Tuesday 24 February. Parents are reminded that these are public meetings and you are welcome to attend. If you have matters which you wish to raise with the Board, please feel free to make contact with the Board Secretary, Jos Caughley on 8434529, ext 803.

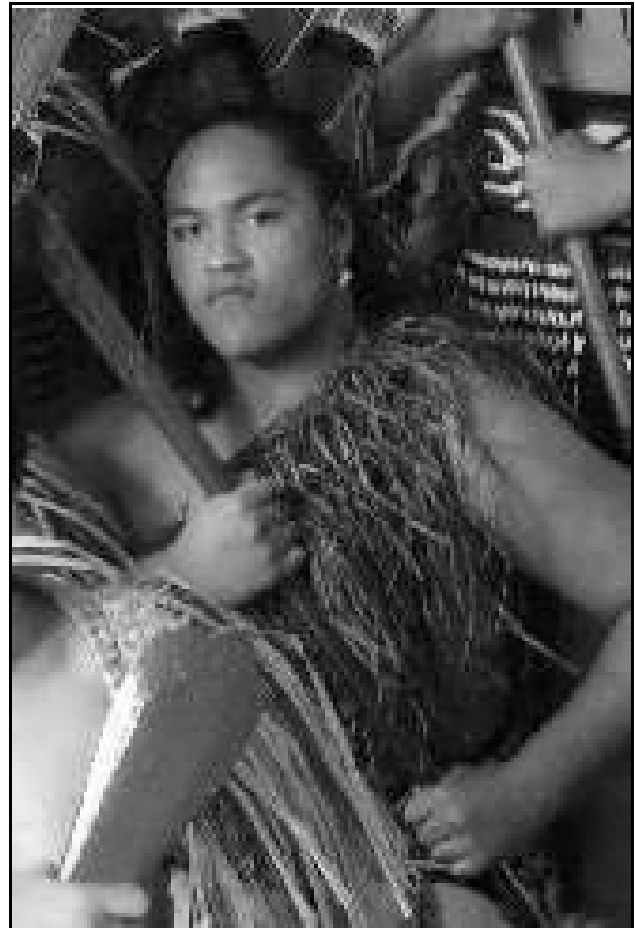
The Board has a number of sub-committees working hard in the interests of the school. Key areas of endeavour for the board this term are as follows:

1. The publication of the (very positive) outcomes of the Term 4 ERO report.
2. The focus on affirming the school's strategic direction including – Mission, Vision, Values and Strategic Goals.
3. Surveying parent opinion.
4. Improvements to the school environment.
5. Continuing to improve student achievement.

REMEMBERING HOKI RANGITAAWA

There was not a member of the Melville High School community who was not touched by the tragic passing of Hoki Rangitaawa mid morning on Monday 25 January this year. Killed in a motor vehicle accident while returning with his father and uncle from Kawhia, this young 17 year old had so much in store for him in his final year at Melville. A passionate rugby player, skilled member and leader of our Mangakotukutuku Kapa Haka group and popular 'big bro' to a host of fellow students, Hoki had a warm disposition that made him popular with students and staff alike.

The miracle son of Eric and Rebecca Rangitaawa, Hoki maintained a warm and supportive manner. Hoki was farewelled in a moving ceremony at Te Kotahitanga Marae in Otorohanga. Our thoughts and best wishes are extended to his whanau and friends at this sad time. The school is holding a memorial service for Hoki on Wednesday 4 March in the school hall at 10.30 am.
Moe mai e tama, moe mai.



**Absence Line - phone 843 5212
or text 027 287 2428**

Please phone or text the above numbers if your child is absent from school for any reason. No note is required on return to school if you phone or text in.

Deans

Deans are available regarding any subject or behaviour concerns you may have about your child. Phone messages will be responded to at their earliest convenience.

Student Services Centre

- Notification of change of details
- First aid
- Student sign-in late procedures
- Student sign out/in for appointments
- Lost property
- Stationery/Uniform Shop
- Absence letters
- Fees payments

Guidance Counsellors

Students and families are invited to make appointments with Ron and Kathy Cronin-Lampe during tutor time each day or by phone (843 4529 ext 939/940).

Careers Adviser

Students and parents are welcome to make appointments with Mrs Searancke for advice on courses and careers.

International Students

Head of Department, Mrs Clapham, is available to advise all international students and homestay families regarding any issues on 843 4529 ext 930.

TRANSPORT ISSUES

Many families are experiencing the huge impact of the decision made by the Ministry of Education school bus services from the commencement of this year. The school was notified by email on 5 December 2008 of changes that **Go Bus** has been directed to make to the way the current services are operated.

We, however, were only informed about changes to some of the runs around the Pirongia – Te Pahu – Ngahinapouri areas. We received no information about other changes to other areas. The Board of Trustees is particularly concerned that such notification was made at such a late time of the year and the impact on families was left for schools to communicate to parents in such a short timeframe.

The Board has communicated this deep concern to **Multiserve** in Auckland who manage the contracting-out for the Ministry of Education, for their lack of consultation and notice during this process. We are also seeking a review of the decision to axe school transport services for our rural families.

C Hamill, Principal

WA SAN BON

Professional taiko Japanese drumming group, Wa San Bon gave a lunchtime performance in the school hall on Monday 16 February. This group is currently touring New Zealand and will be performing in concert at the Hamilton Gardens Summer Festival on 2 February.

Even though one of the members was ill, the duo performed a very energetic set that brought down the house. Already we are organising a return visit next year!

UNIFORM 2009

The school year has begun really well with all our students looking very smart in the new style uniform shirts. The girls can now purchase tailored shorts that look very nice and are more suitable for girls than the style we had previously.

In general, students are complying with our uniform rules. There were delays with some items being held up overseas earlier in the year but all items are now available. We have changed suppliers, so the uniform items are now much cheaper also.

All students have been issued with a Homework Diary by their form teacher. This booklet has all the information that parents need regarding acceptable uniform items, particularly shoes and sandals. Parents are requested to look at the Uniform page and check the requirements to avoid purchasing items that may be inappropriate.

Melville High School is a uniform school and we ask that students come to school in complete uniform at all times. Students who have a problem meeting this requirement must go and see a member of the Senior Leadership Team at the beginning of the school day. Students who continually come to school without the correct uniform may be temporarily withdrawn from class. In cases of persistent non-compliance, a student may be asked to go home until the situation is resolved. The school is keen to work with parents so that all students are wearing our uniform with pride.

Mrs Tuck, Assistant Principal

SCHOOL CHAPLAIN

Pastor Nigel Rowlings is our School Chaplain and he is on site every Thursday.

To catch up with Nigel, please make an appointment with Mrs Caughley or the Guidance Team.

2009 TERM 1 CALENDAR

FEBRUARY

Week 4

Tues 24 School Athletics Sports
Board of Trustees Meeting -
6.00 pm

MARCH

Week 5

Tues 3 Class and portrait photos
Wed 4 ACORP – school finishes
1.30 pm
Te Whanau Manaaki Tangata
Meeting 6.00 pm

Week 6

Mon 9 School Swimming Sports
Tues 10 Class and ID photos
Wed 11 Zone Athletics

Week 7

Fri 20 Interim Reports posted
Newsletter posted

Week 8

Tues 24 Parent Report Evening
Wed 25 Waikato Secondary Swimming
Champs

APRIL

Week 9

Wed 1 Raft Race
Fri 3 ACORP – school finishes
1.30 pm

Week 10

Thurs 9 Last day of term
Fri 10 Good Friday

2009 TERM DATES

Term 1 2 February – 9 April

Term 2 27 April – 3 July

Term 3 20 July – 25 September

Term 4 12 October – 15 December

STAFF FAREWELLS

Mr Ashok Kumar

We bid farewell to **Mr Ashok Kumar** in a fortnight. Mr Kumar has taught in the science department of Melville High School for over 12 years after relocating to Hamilton from his first New Zealand teaching position at Wairoa College. He has undertaken a variety of leadership roles in the science department and as a member of the Senior Leadership Team during his time here. A great reflective practitioner, Mr Kumar is off on promotion to Fairfield College in early March to undertake the role of Deputy Principal. A popular and successful teacher, with a passion for physics and wood turning, he has undertaken a variety of additional responsibilities in the areas of timetabling and NZQA too. We wish him all the very best for the future and thank him for his tremendous contribution to the school.

Mr Barrie Mawston

Longstanding Caretaker and Groundsman, **Mr Barrie Mawston** bade farewell to Melville High School over the Christmas break. Barrie was a tireless employee who was very obliging and a great supporter of athletics at Melville High. He had the personal distinction of running against Sir Peter Snell in his hey-day. Barrie has been a familiar figure at Melville High School for nearly 14 years. He had, of late, found the challenge of his injured hip a huge obstacle but still applied himself willingly. We farewelled Barrie at a staff luncheon just before school began. Our best wishes are extended to Barrie and his wife, Cushla, in their retirement.

WELCOMING NEW STAFF

We welcome **Mr Mike Meagher** to the Food and Fabric Department where he takes up the position of cooking teacher.

Previously having taught at Western Heights High School in Rotorua, Mr Meagher has recently been working with Kitchens Australia.

Outside the world of food, his interests include V8 supercars and fly fishing.

CAMPUS COP AT MELVILLE HIGH

Melville High School Board of Trustees is pleased to be part of a new New Zealand Police pilot in Hamilton City of Campus Cop. After meeting with Police Superintendent Rob Lyndsay, the Board affirmed their participation in the programme in November last year. There are three other schools (Hamilton's Fraser, Hamilton Girls' and Fairfield Intermediate) which are also in the pilot. The aim is to develop stronger working relationships with Police in an attempt to strengthen student achievement through reducing youth offending and addressing the risk factors facing children and young people in our school and in our community.

Each of the schools has a uniformed community police officer based fulltime at the school. Our Campus Cop is **Andrew Dempsey**, an ex student of Melville High, Melville Intermediate and Deanwell Primary. He is an experienced policeman, is married with three children and has spent a large part of his life living in south Hamilton.

Andrew has his own patrol car and has an office based in the Deanery.

The goals of the Campus Constable programme are to:

- *Build relationships with students, families, teachers and the community.*
- *Decrease the number of truants in the schools they are working in as well as the respective 'feeder' schools.*
- *Decrease the number of 'school yard' incidents within the school.*
- *Decrease criminal youth offending during school hours in the environs of the schools they are working in.*
- *Reduce the number of students on the schools' Rock On programme.*
- *To increase the number of 'notifications' from students to both the Campus Constables and the Youth Education Officers.*
- *Facilitate the referral process of students 'at risk' to relevant agencies, both Government and non government agencies.*
- *Work in partnership with the school to provide appropriate early intervention strategies to support students at risk.*

Andrew is very approachable and can be contacted at 8434529 extn 963.

C Hamill, P rincipal

SUPPORTING POSITIVE PERFORMANCE - YEAR 13 INITIATIVE

My congratulations are extended to all senior students who maximised the opportunities provided at their recent Leadership Camp – well done. In an attempt to sustain this great start we have established the following initiatives to support them and nurture their success with their studies. The key aspects of this development are as follows:

- Being in the right place
- Having the right attitude
- Enjoying the right to unique privileges

1 Being in the right place

a. Senior Common Room

The Senior **Common Room** will be open this year for Year 13 students only. It is to be managed, in collaboration with the SLT and the Senior Dean, by senior students.

b. A place to study

Provision is being made to establish a '**Study Haven**' in room C1A at the northern end of C Block. It is for Year 13 students and will only be shared with selected students who are undertaking distant learning options. It is being made available solely for the provision and support of students who wish to study.

c. In class

All students are expected to attend all timetabled classes, including study and tutor.

2 Having the right attitude

a. Expectations

Staff have already shared with Year 13 students at camp some of the opportunities there are available this year. We have established a '**Checkpoint Programme**' to provide support and provide clear expectations for all senior students. The checkpoint process will occur twice a term – in Weeks 3/4 and Weeks 9/10, and provide feedback to all students. The major areas of focus of each checkpoint will be:

- Attendance
- Application
- Submission of assessments

Students who are having difficulty with these expectations will be provided with additional support and if necessary assisted to identify other suitable learning options. We will involve your families in this process.

b. Being at School

All Year 13 students are expected to be at school during the school day. Students should be:

- a) In their subject class **or**
- b) In the **Study Haven** **or**
- c) In the **Senior Common Room**

Therefore there is no place for them to be out of class, out of school, or anywhere else during this time. This will support their academic success and model the appropriate behaviour to junior students.

continued next page

Enjoying the right to unique privileges

There are privileges that are offered to senior students including:

- 1 Not being required to wear a uniform. However, clothing needs to be appropriate.
- 2 Being able to leave school at interval and lunchtime periods, without the need to sign in or out. However, at all other times, Year 13 students need to sign out.
- 3 If senior students have a Period 1 or a Period 5 Study period:
 - a. They may start late providing they arrive in plenty of time for Period 2.
 - b. They may leave school at 1.30 p.m., providing they have no other commitments.
- 4 They may choose which environment to be in during study periods.
- 5 Senior Students will have access to their own locker for the nominal bond of \$20.00 which is fully refundable providing the key is returned and the locker is in a satisfactory state.

These privileges are subject to review and should there be major issues identified at 'checkpoints' or if you are unable to meet the expectations identified above they may be at risk.

I am confident that parents will support these initiatives and I look forward to building on the senior students' very positive beginning to the year.



Year 13 students building on their skills at Leadership Camp

PATHWAYS @ MELVILLE 2009

Gateway, Careers, STAR

The Pathways Department is able to support students to identify and experience different working environments so that they are able to leave school with a plan for what they would like to achieve in their working life.

We welcomed **Mrs Sam Cutler** to the department at the end of last year. Mrs Cutler will be working with students to find Gateway work experience and to work with those students and their employers to ensure the placement goes smoothly. Students will select unit standards connected to their work experience and will work with us to gain the credits. Already 12 students have signed up to Gateway and we are looking forward to working with them.

Careers education will have more of a focus this year, especially for senior students during study period. During Terms 1 and 2, students will work with Youth Transition Services to receive careers advice and training opportunities. Year 11 students will join Mrs Searancke for individual careers discussions where we will examine ideas for their future lives.

STAR is a resource provided for schools to fund courses which are supported by an Industry Training Organisation. We offer Hospitality, Tourism, Furniture and Building courses, all of which are supported by external organisations. The STAR resource also enables students to attend short courses at WINTEC where they participate in training days. WINTEC has recently opened a wonderful Media Arts Centre and we would like to hear from students with a passion in this area.

If you think we can assist you and your student at Pathways, please contact us through the school office. We want to work with our students to help them transition successfully into the workplace when they are ready.

Mrs Searancke, Director of Pathways

NEW ICT PROVIDERS

The Property Committee undertook a review of ICT provision with a focus to improve ICT at school. The parameters of this review were to focus on sustainable solutions so that Melville High School could establish:

1. a stable, industry standard network infrastructure/platform to service and support current and future ICT needs;
2. an effective ongoing ICT network management/support day to day provision;
3. the prerequisites that would be appropriate for a secondary school which wanted to be in the forefront of the integration of ICT in learning and school management.

As a consequence we have appointed Bay of Plenty based company **Totali** as our new ICT provider. Extensive work was undertaken over the Christmas break to begin to implement these improvements. In the process, we bade farewell to our ICT Technician, Mr Rob Swney. Rob helped maintain and establish our network and was a personable member of staff.

Totali, a company which has worked with Katikati and Otumoetai Colleges, has appointed Sam Wilmer-Proven as the fulltime on-site technician.

LATE ENROLMENTS

The beginning of the year is a busy time and we note that there have been delays in enrolling students. School has been open for enrolments from Tuesday 27 January 2009, with appointments being made from Thursday 22 January. School officially got under way for students on Monday 2 February with the bulk of our enrolments being undertaken in Term 4 2008.

The enrolment information was advertised in the Waikato Times and the free weekly, The Hamilton Press, on three separate occasions. The dates were also posted on the main office doors from Monday 12 January 2009.

Enrolments after Opening Day, 2 February, are deemed to be late enrolments. All such enrolments require an interview with the Junior Dean, Mr. Lester Silver [Years 9 and 10] or the Senior Dean, Mrs. Kathleen Christian [Years 11-13]. Both of these staff also have classes to teach.

As a result, there have been delays in late enrolments being processed. We have provided additional release time for our Deans and they will work through the late enrolments on a first come first serve basis.

We value your support and therefore need to ensure that the late enrolment of students is well managed and interviews are a critical part of this process. We thank you for your understanding in this matter.



Year 9 students enjoying their first day at Melville High

EDUCATION REVIEW OFFICE REPORT

The following are Excerpts from the ERO report received in December 2008:

The board and school management have responded positively and have made good progress in addressing the recommendations in the Supplementary Review report of 2006.

The school gathers, collates and analyses achievement data across all year levels which is used to inform self review and ongoing school-wide decision making.

Analysis of this NCEA data from 2005 to 2007 indicates that the proportion of students completing the qualification is increasing, and that completion rates are now considerably closer to national averages. The same data from national qualifications indicates that Māori students, on average, are achieving significantly below their non-Māori peers at Level 1, and in the required literacy and numeracy qualification. However, Māori students achieve at comparable rates to non-Māori at Level 2 and 3 in the school.

Areas of good performance

Governance: *Trustees provide committed and well-informed support for school development, including the provision of facilities and resources.*

Leadership: *The principal, with the support of the senior leadership team is providing effective educational leadership in maintaining a focus on improving professional practice.*

Professional learning and development: *Staff at all levels of the school are involved in an extensive and well-structured programme of professional learning and development.*

Te Kotahitanga: *Te Kotahitanga is a significant feature of the school's efforts to improve student engagement with learning through the promotion of culturally responsive classroom relationships. Te Kotahitanga promotes a greater use of cooperative learning strategies and discursive teaching styles designed to involve students in the learning process.*

Learning support: *The school has well-developed systems and programmes to support students in their learning. The Learning Initiatives Department (LID) provides specialised programmes for identified groups of students in a home room setting, with a particular emphasis on literacy, numeracy, vocational and life skills.*

Restorative practice: *A restorative approach to managing relationships is well embedded in school practices.*

Opportunities for students: *The school is working hard to provide a greater range of learning experiences and opportunities for students, both within and beyond the classroom.*

Pastoral care: *The school has an extensive pastoral care and support network.*

Compliance

ERO's investigations did not identify any areas of concern.

Recommendations

ERO recommends that the board and senior management:

- 6.1 *as part of the school's self-review programme, undertake a review of the culture for learning with a view to raising students' motivation and attitude and to assist in increasing levels of student engagement and improved levels of student achievement; and*
- 6.2 *further develop and promote high quality teaching practices, including clearly defined expectations for teachers in the consistent use of assessment information to plan differentiated learning programmes and the provision of a range of teaching strategies to actively engage students with learning.*

A full copy of the report is available from the school office or on line at:

[http://www.ero.govt.nz/ero/reppub.nsf/0/7F4B5AD7449372F2CC25754D0023346C/\\$File/137.htm?Open](http://www.ero.govt.nz/ero/reppub.nsf/0/7F4B5AD7449372F2CC25754D0023346C/$File/137.htm?Open)

AUSTRALIAN HOCKEY TOUR DECEMBER 5 – 14 DECEMBER 2008

At the end of last year, 19 students from Melville High travelled to Australia to compete in the Quikstix School Cup in Canberra. The level of competition that the team encountered proved to be very challenging. Although we were unable to win a game during the mixed gender five-day tournament, the team showed continual improvement during the week. Playing two games per day in warm temperatures taught the team a lot about preparation, recovery and utilising the whole squad. In between games, we were able to indulge in some sightseeing and entertainment. Activities that the students participated in during their stay in Canberra included: visiting the national zoo, touring the parliament building, visiting the Questacom Science and Technology exhibitions, touring the Australian Institute of Sport facilities, visiting the national art gallery, and shopping in Queanbeayan.



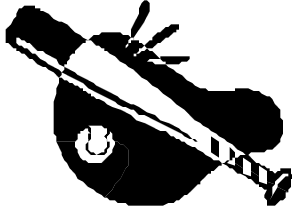
At the conclusion of the tournament, we drove back to Sydney and stayed two nights at Sydney University. The tour party enjoyed exploring downtown Sydney and its various attractions but we left with some very tired people after one full on day of exploration (we left our accommodation for downtown Sydney at 9.00 am and returned at 8.00 pm that night).

The students' behaviour throughout the 10-day trip was outstanding and they were fantastic ambassadors for Melville High School. It was hugely satisfying to be part of such a magnificent group of students and I have no doubt that this trip will be something they will never forget.

A huge thank you is extended to all the people who ensured that this trip was possible: Mr Hamill, Mr McNulty, Bruce Tocker, Lynette Malone and Mr Shirley. And finally, a special thank you to the parents who took leave from their jobs to accompany the team to Australia: Cherie Griffiths, Brenda Pearson, Lian Cross and Bruce Thorold. And we couldn't have done it without our coach, Mr Joel Finn. He played the important role of being in charge of entertainment throughout the trip as well as doing the hard yards coaching the team.

My advice to every student at Melville High School is to make the most of the opportunities that are given to you this year. Ask anyone who travelled to Australia and they will tell you that it was an experience that they wouldn't hesitate doing again if it was possible.

Mr Edwards, Teacher in Charge of Australian Hockey Tour 2008



Sports@MLV



CRICKET

Cricket was the first sport to get underway this year. We have formed a team to play in the 1st XI competition in conjunction with Hamilton's Fraser High School. They had a practice game against the Hillcrest 1st XI during the holidays which confirmed that we would be competitive at this level. The first competition game was against St John's College where we managed to put on 153, **James** 38 and **Chad** 39. St John's got the runs for the loss of only 4 wickets with James taking 1/9 off 7 overs. The majority of the Melville/Fraser players are Year 10 and 11. The majority of the St John's players are Year 12 and 13. This shows that our team will be very competitive over the next few years.

During the holidays, James captained the Waikato Valley South team in the Northern Districts U15 tournament. James scored the top innings of the tournament, 125, and was selected for the Northern Districts Development team.

We will also be entering a team in the Year 10 Premier Competition in conjunction with Hamilton's Fraser High School. We are looking for someone to assist the team on Saturdays to help with scoring and/or umpiring. If you could help, or know of someone that can, please contact the Sport and Recreation Co-ordinator, Russell Wilson, through the school office.

TOUCH AND SOFTBALL

We are hoping to enter teams in the local competitions this term. Students will be receiving notices in the next week. Any help that could be given in coaching and/or managing teams would be appreciated.

WINTER SPORTS

We will start forming teams for our winter sports codes in March.

UNIFORMS

Over the years we have had a variety of policies relating to sports uniforms. Some of these allowed students to keep these uniforms. With the increase in numbers we are getting in all sports codes, we would like to get as many uniforms as possible back to school. If you have any Melville High School sports uniforms at home we would appreciate them being returned to Student Services. This will enable us to keep the costs down for those students participating this year.

ATHLETICS AND SWIMMING SPORTS

The school's Athletics Sports are to be held on 24 February and the Swimming Sports on 9 March. These events are held away from school and we ask that students pay \$2.00 per event to contribute towards transport costs. This will be collected by Tutor Teachers on the day of the event.

AIKIDO

Congratulations to **Kowhai, Jake** and **Phillip** who obtained their 6th kyu/yellow belts at the end of 2008. The grading panel was impressed with the standard of the students and we know that they have taken their first step on their Aikido journey.

Aikido training will continue this year and I am looking for more students to build on the small group we formed last year.

Mr Suter, Aikido Sensei

COACHES, MANAGERS AND HELPERS

With the growth and popularity of sport within the school, we are always looking for people who can assist us with teams, no matter what the expertise or experience. If you are able to contribute a few hours per week of your valuable time to any sport or recreation activity, please contact Russell Wilson at school.

HILLARY CHALLENGE QUALIFYING WEEKEND

14-15 February

Eight Year 13 students (**Melandi, Paige, Ajsha, Ryan, James, Daniel, Shaun** and **Alex**) recently travelled down to The Sir Edmund Hillary Outdoor Pursuits Centre Tongariro, in an attempt to qualify for the Hillary Challenge that is held in May each year. The first challenge had to be completed by the team at the end of last year, which involved the students spending a day planting 300 native trees along the banks of the Waikato River at Rangiriri. After completing this environmental task, a report was written and submitted outlining the significance of the effort put in by the team.

Our team competed against 19 other schools from throughout the North Island during the qualification weekend and the quality and standard by the majority of schools competing was extremely high. On the Saturday, each team had to complete five 60-minute challenges that included mountain biking, kayaking, high rope work and adventure based learning activities. The final day of competition on Sunday involved all teams going head to head in a three hour Rogaine in a nearby forest that tested orienteering skills such as map reading and compass work, and of course, basic fitness.

We are yet to find out where we were placed in relation to the other schools during the qualifying weekend, with all 20 schools vying for just three places in the Hillary Challenge. Whatever the final result, this year's team performed outstandingly and showed a massive improvement on 2008's effort.

Mr Edwards, Teacher in charge Hillary Challenge

YEAR 13 LEADERSHIP CAMP

On Tuesday 3 February, Year 13 students departed for a three day camp at Karapiro's Finlay Park. The programme kicked off with a fun filled top town event and water safety. Then as darkness settled in, it was time for the glow worm expedition.

Wednesday featured the animal survival game and problem solving activities interspersed with leadership workshops. The evening was filled with theatresports and student skits followed by a relaxing spa and movie.

The raft race was the feature of Thursday's programme before cleaning up and returning home.

The food was nutritious and plentiful and the warm weather encouraged lots of water-based activities. Staff and students had a great time with a wide range of experiences and learning about leadership. Students are now expected to put theory into practice as they contribute to their final year at Melville High.

Year 12 students are reminded that next year begins with a three day camp and full attendance and participation is a condition of their entry to Year 13.

Mr Ledson, Teacher in charge of Year 13 Leadership Camp



Taking up the challenges of leadership camp